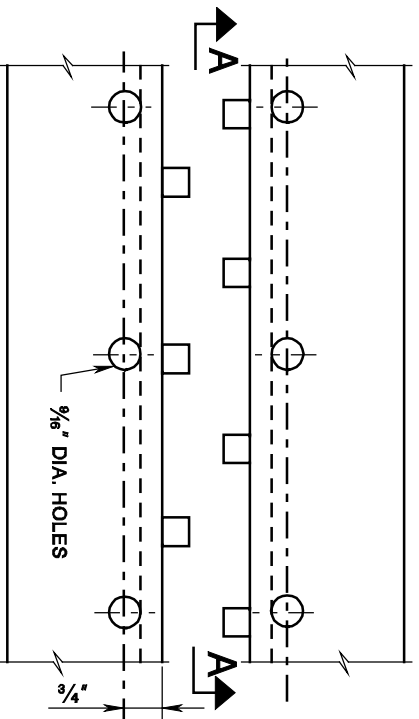


JOINT SEALER SEAT DEPTH DETAILS
(SHEET 2)

ISSUED: 2009

PLATE
3.8-3



NOTES:

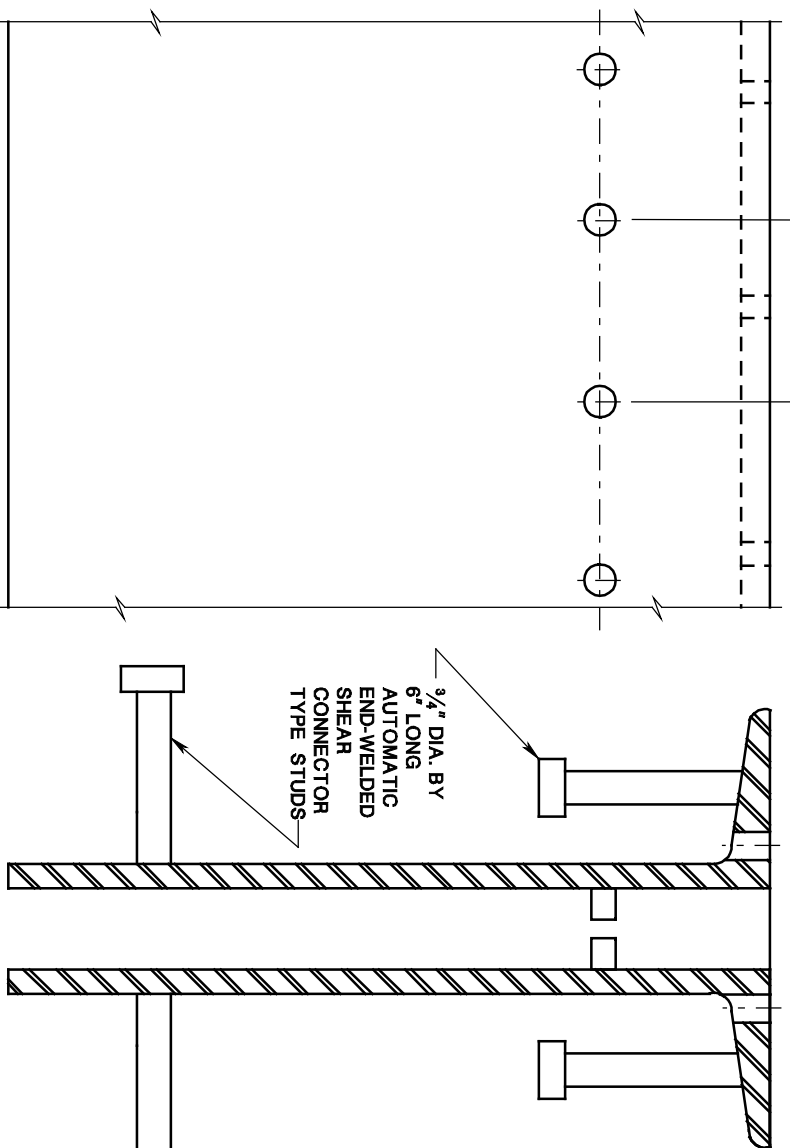
AUTOMATIC END-WELDED STUDS SHALL BE INSTALLED PRIOR TO ZINC-COATING OF ASSEMBLY. AREAS OF STEEL ON WHICH STUDS ARE TO BE WELDED, SHALL BE CLEANED OF RUST AND SCALE BY GRINDING.



PLAN

4"
TYP. SPACING

3/8" DIA. BY 3/4" (LENGTH AFTER WELD = 3/8") AUTOMATIC END-WELDED NO THREAD STUDS. ALTERNATE SPACING ON OPPOSITE ANGLES.



SECTION A - A

SECTION B - B